

Prime Office Space For Lease Heart of Union Square Move-In Condition



Rental Price: Negotiable

Possession: Immediate

Ceiling Height: 11'

Size: 6th Floor - 3,000 RSF

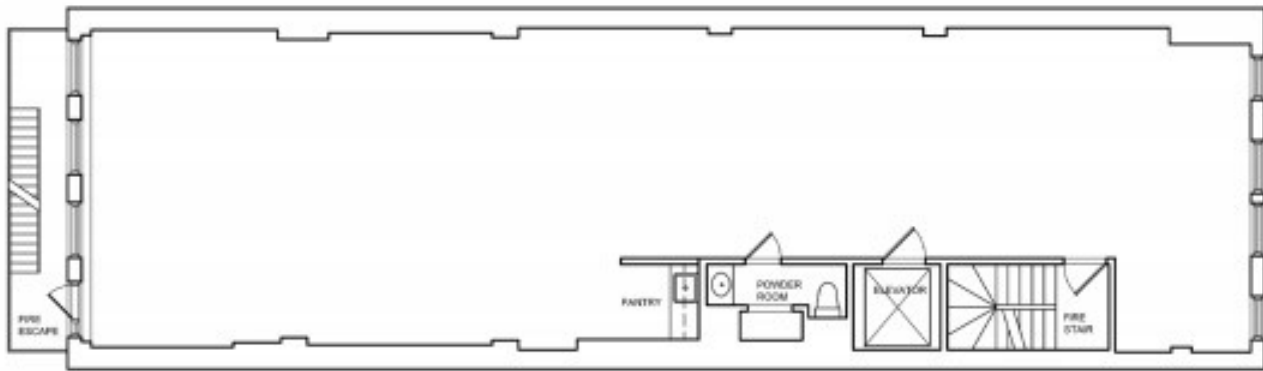
Notes:

- Private keyed access elevator that opens directly into the space.
- Beautiful hardwood floors and pantry.
- Excellent light throughout space.
- 24/7/365 Access.
- Steps from the 4,5,6 Train. 3 blocks from F and M Train.
- High-speed internet from multiple providers.

18E17th

UNSQ

6th Floor Layout



For Showings Please Contact:

Jonathan Arnold

917-291-0934

jarnold45@gmail.com